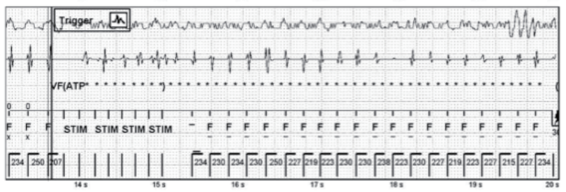
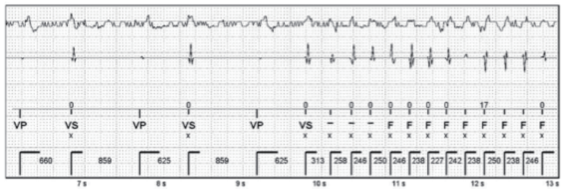
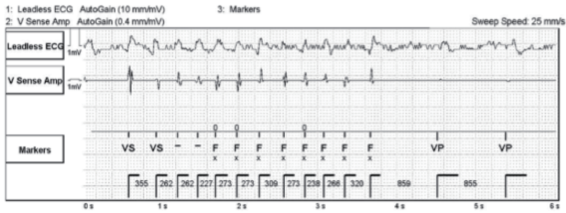


**Supplementary Figure 1.** Changes in the ventricular high voltage of the implantable cardioverter defibrillator (ICD) lead at pre-/post-magnetic resonance imaging (MRI) and follow-up visit ( $p = 0.79$ ). All ICDs were conventional devices.

**Episode: VF (250 bpm / 240 ms)** VT/VF Episode 1 of 1  
 20 Jun 2012 16:38 Page 2 of 3

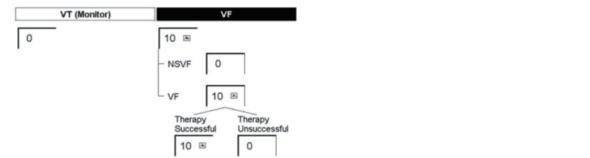


**Episodes Summary** Page 1 of 2

Episodes Last Cleared	10 Dec 2015 12:49	Last Read	8 Apr 2016 14:29
SEGMs Last Cleared	10 Dec 2015 12:49		

Therapy Summary		Results of ATP Delivery	
ATP Delivered	7	VT	VF
Shocks Delivered	9	0	1
Max Energy Shocks	0	0	6
Last HV Lead Impedance	51 Ω	Accelerations	0
VT Zone is Monitor Only			
Total Aborted Shocks	1		

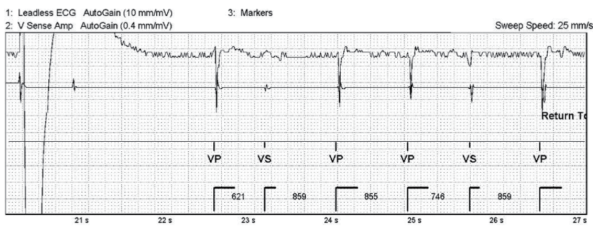
Total VT/VF Episodes	10
SVT Episodes	0



VT/VF Episodes Date / Time	Type	Rate (min-1)	Duration (M.S)	Therapy Delivered	Alerts
11 Mar 2016 8:55	VF	255	00:15	30J	
10 Mar 2016 1:57	VF	230	00:15	ATP, 30J	
9 Mar 2016 17:13	VF	230	00:15	ATP, 30J	
7 Mar 2016 20:56	VF	230	00:16	ATP, 30J	
4 Mar 2016 20:44	VF	235	00:16	ATP, 30J	
4 Mar 2016 7:36	VF	228	00:15	ATP, 30J	
29 Feb 2016 14:21	VF	235	00:15	ATP, 30J	
22 Feb 2016 1:36	VF	260	00:16	30J	
14 Jan 2016 4:12	VF	250	00:07	ATP	
7 Jan 2016 16:18	VF	285	00:15	30J	

Other Episodes Date / Time	Type	Peak A Rate (min-1)	Duration (D.H.M.S)	Alerts
5 Apr 2016 8:49	Morphology Template Update			
29 Mar 2016 0:49	Morphology Template Update			
25 Mar 2016 8:49	Morphology Template Update			
11 Mar 2016 1:57	Morphology Template Update			
5 Mar 2016 15:35	Morphology Template Update			

**Episode: VF (250 bpm / 240 ms) (Continued)** VT/VF Episode 1 of 1  
 20 Jun 2012 16:38 Page 3 of 3



**Episode: VF (230 min-1 / 260 ms)** VT/VF Episode 9 of 10  
 10 Mar 2016 1:57 Page 2 of 3

