

## A Tulip-Shaped Gastric Carcinoid Tumor

A 44-year-old woman was referred for endoscopic ultrasound (EUS) evaluation of a gastric submucosal tumor that was found during a health checkup. At endoscopy, a tulip-like mass with a central lobulated dent was found in the upper body of the stomach (Fig. 1). A biopsy disclosed only dilated blood vessels in edematous stroma. EUS revealed a 29 × 25-mm inhomogeneously hypoechoic protruding mass in the submucosal layer (Fig. 2). Contrast-enhanced computed tomography revealed a high-enhancing submucosal mass in the stomach with no metastatic lesions. A laparoscopic wedge resection was done. The resected tumor had ribbon-like patterns of uniform cells with round nuclei and pink cytoplasm, confined mainly to the submucosa (Fig. 3A). Immunohistochemically, the tumor cells

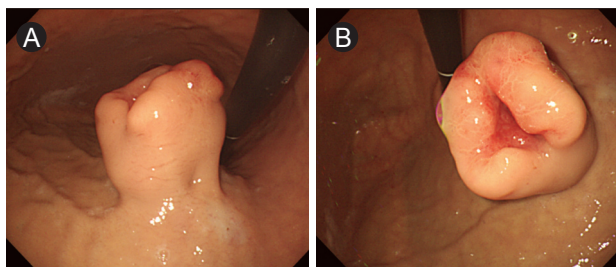
were stained with synaptophysin (Fig. 3B). The mass was diagnosed as a gastric carcinoid tumor. This patient has been followed for 2 years with no evidence of recurrence.

### Conflict of interest

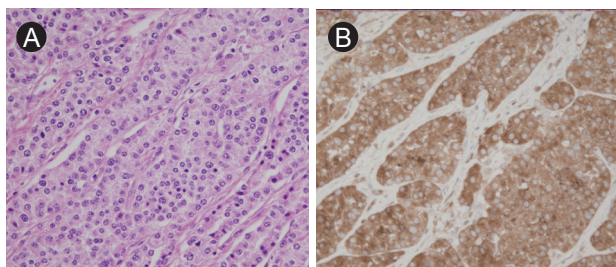
No potential conflict of interest relevant to this article was reported.

### Jae Hoon Jeong and Gwang Ha Kim

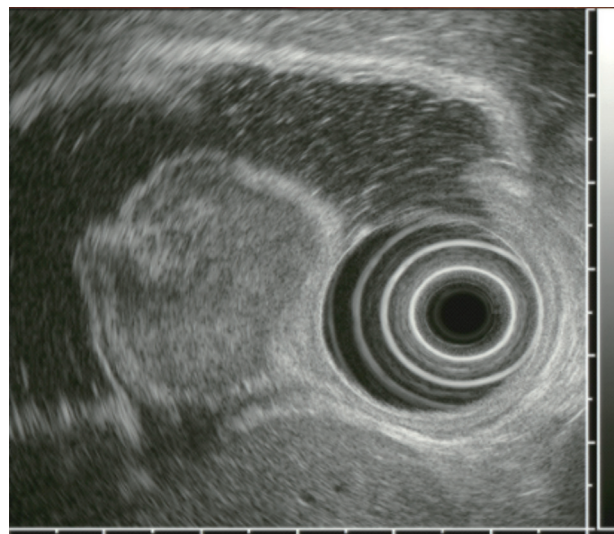
Department of Internal Medicine, Pusan National University School of Medicine, Busan, Korea



**Figure 1.** At endoscopy, a smooth, tulip-like mass with a central lobulated dent was found in the upper body of the stomach (A, B).



**Figure 3.** (A) Light microscopy showed ribbon-like patterns of uniform cells with round nuclei and pink cytoplasm, mainly confined to the submucosa (H&E, × 100). (B) On immunohistochemical study, the tumor cells were stained with synaptophysin (× 100).



**Figure 2.** Endoscopic ultrasound revealed an about 29 × 25-mm inhomogeneously hypoechoic protruding mass in the submucosal layer.

Received : July 19, 2010

Revised : July 21, 2010

Accepted: July 23, 2010

Copyright © 2012 The Korean Association of Internal Medicine

This is an Open Access article distributed under the terms of the Creative Commons Attribution Non-Commercial License (<http://creativecommons.org/licenses/by-nc/3.0/>) which permits unrestricted non-commercial use, distribution, and reproduction in any medium, provided the original work is properly cited.